

09/09/2009, 10:00 to 12:00 h



Press release on the business development in the 1st half of 2009 and outlook for the MAHLE Group

Agenda

MAHLE

Driven by performance

- Business environment/economic situation in the automotive industry
- Business development in 2009 and outlook
- MAHLE daycare facility
- Preview of the IAA 2009

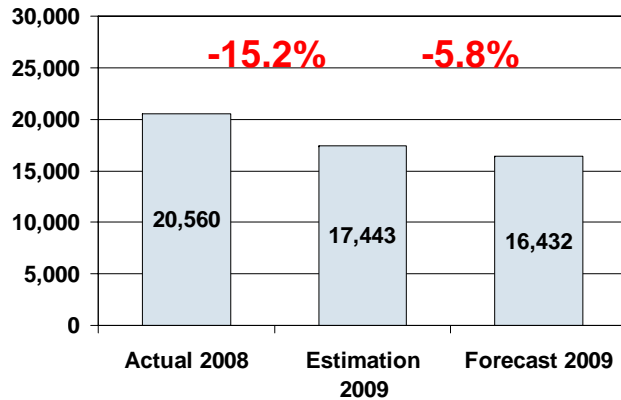
Business environment/economic situation

Production of passenger cars and light commercial vehicles 2008/2009 [in thousand pcs.]

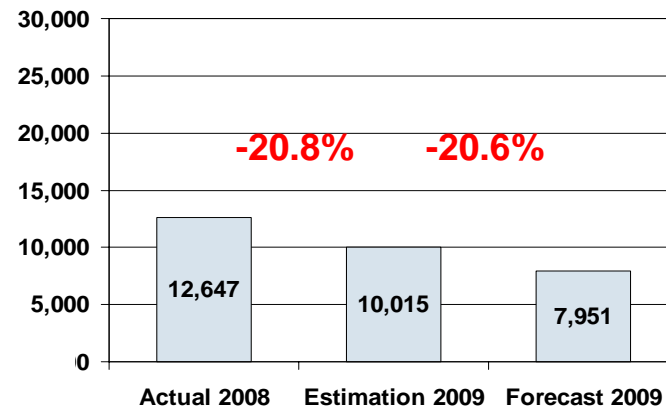
MAHLE

Driven by performance

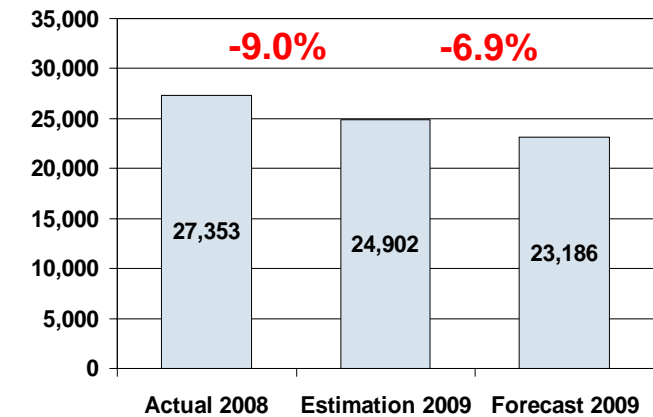
Europe



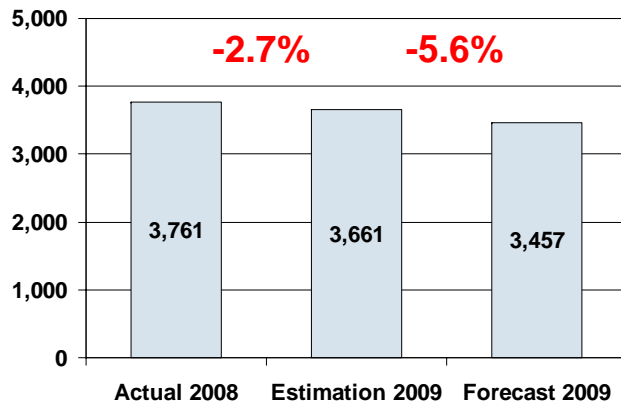
NAFTA



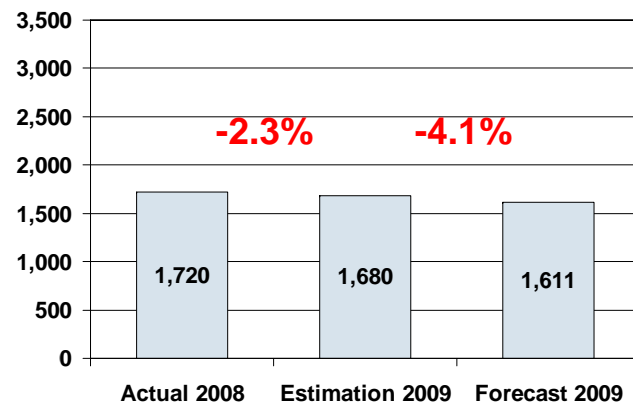
Asia/Pacific



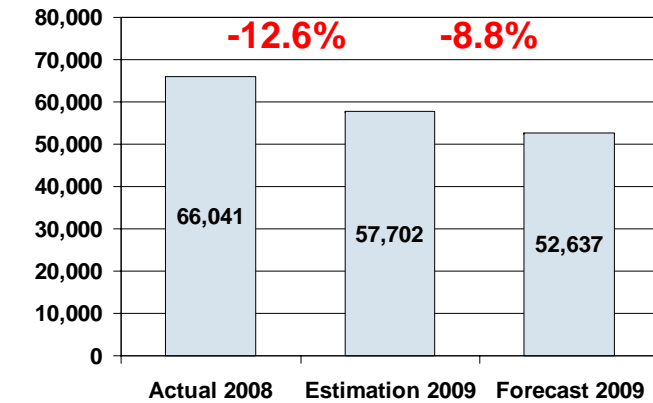
Mercosur



ROW



World market



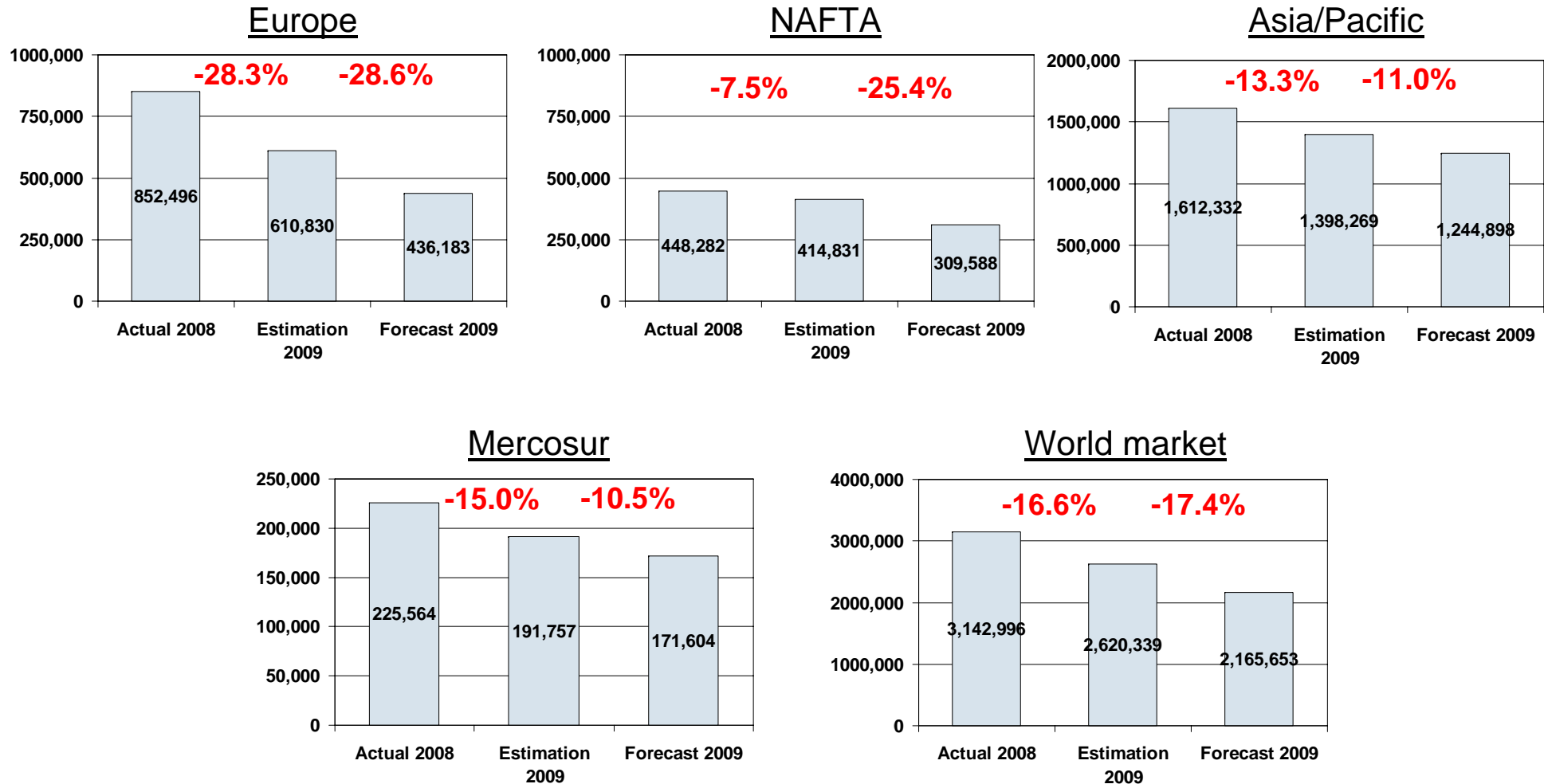
Source: CSM AutoBase June 2009

Business environment/economic situation

Production of heavy commercial vehicles and buses (>6 t) 2008/2009 [in pcs.]

MAHLE

Driven by performance



Source: CSM AutoBase June 2009

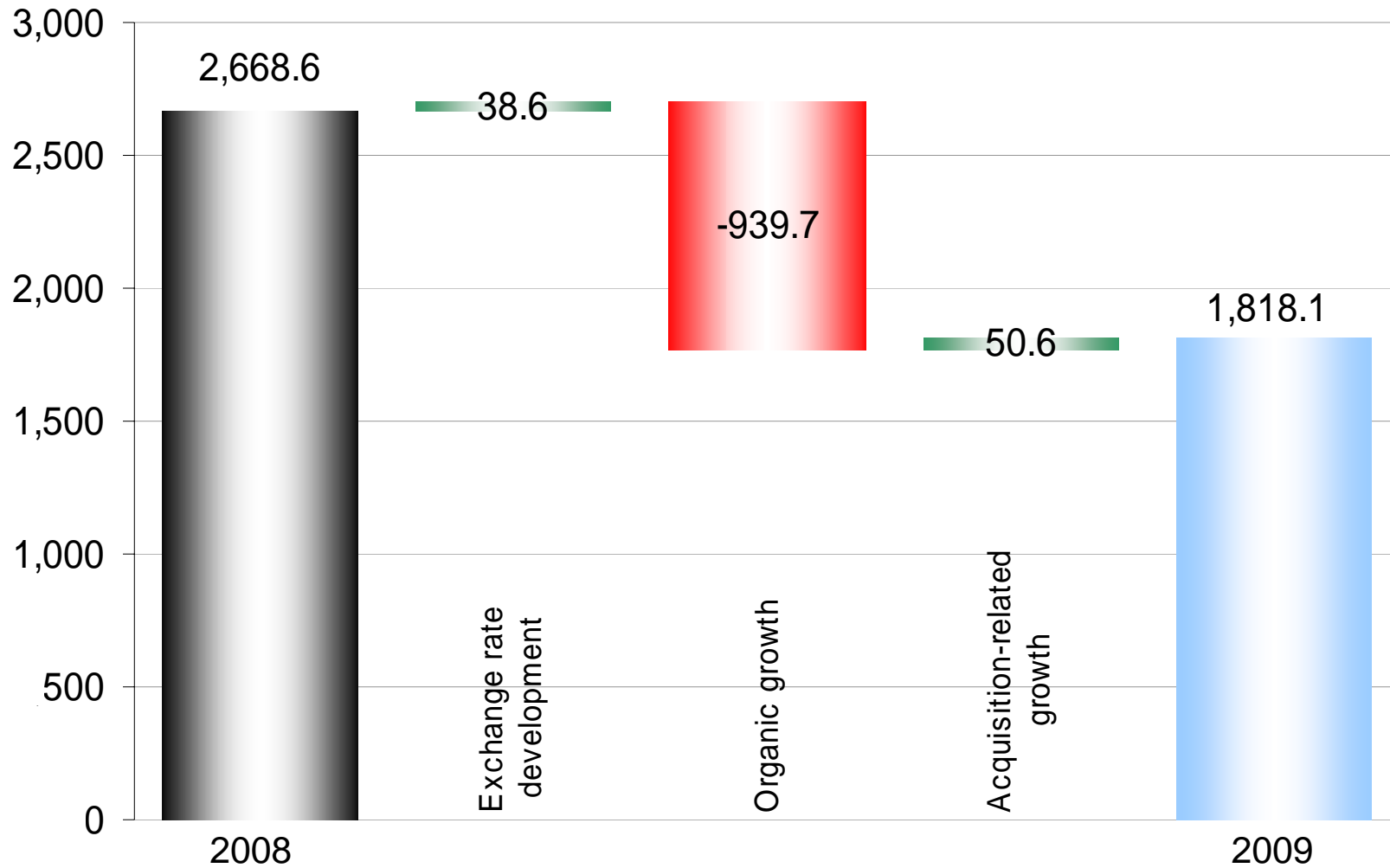
Business development in 2009 – MAHLE Group

Sales in comparison with previous year – 1st half year

[Mio. EUR]



Driven by performance

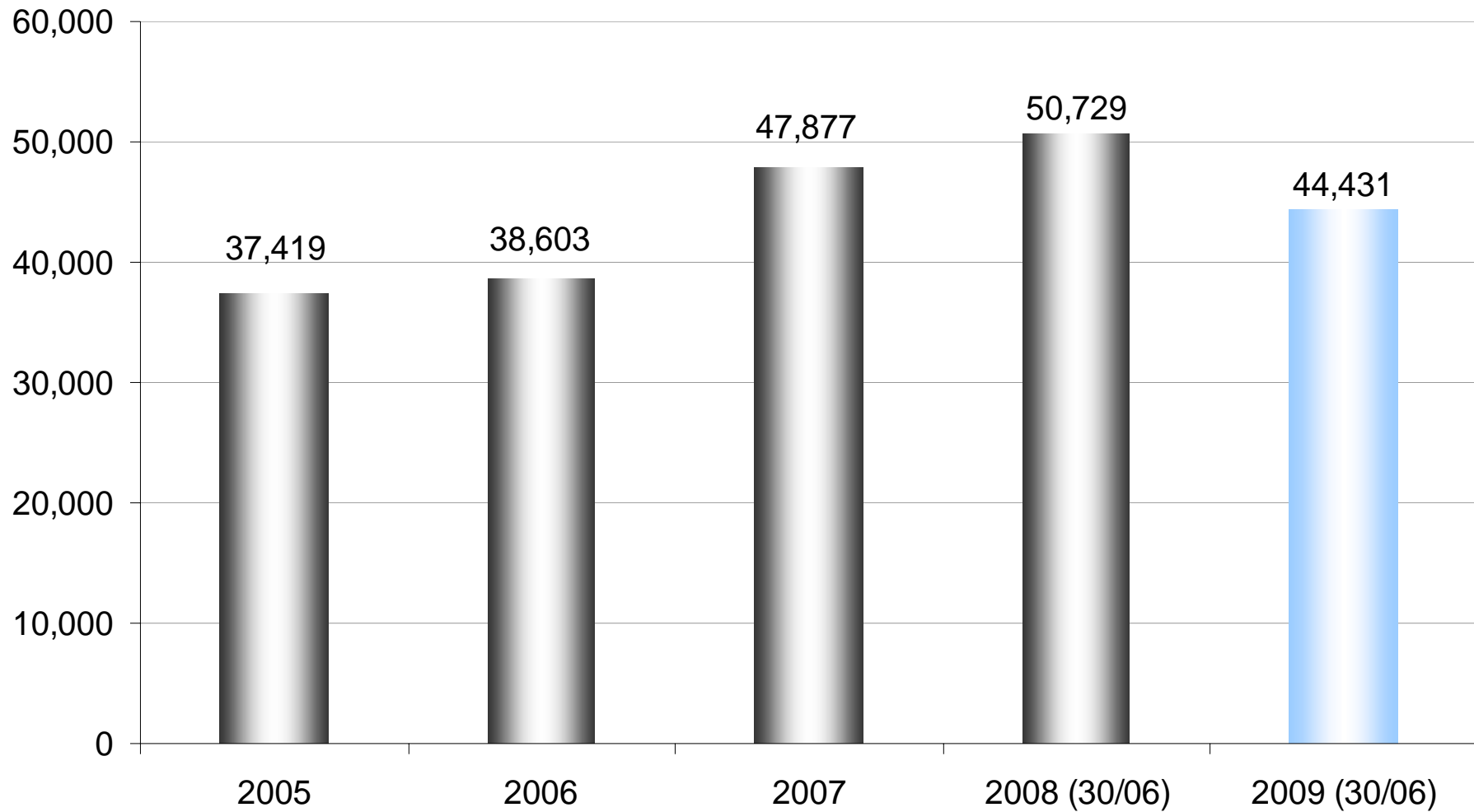


Business development in 2009 – MAHLE Group

Headcount development



Driven by performance



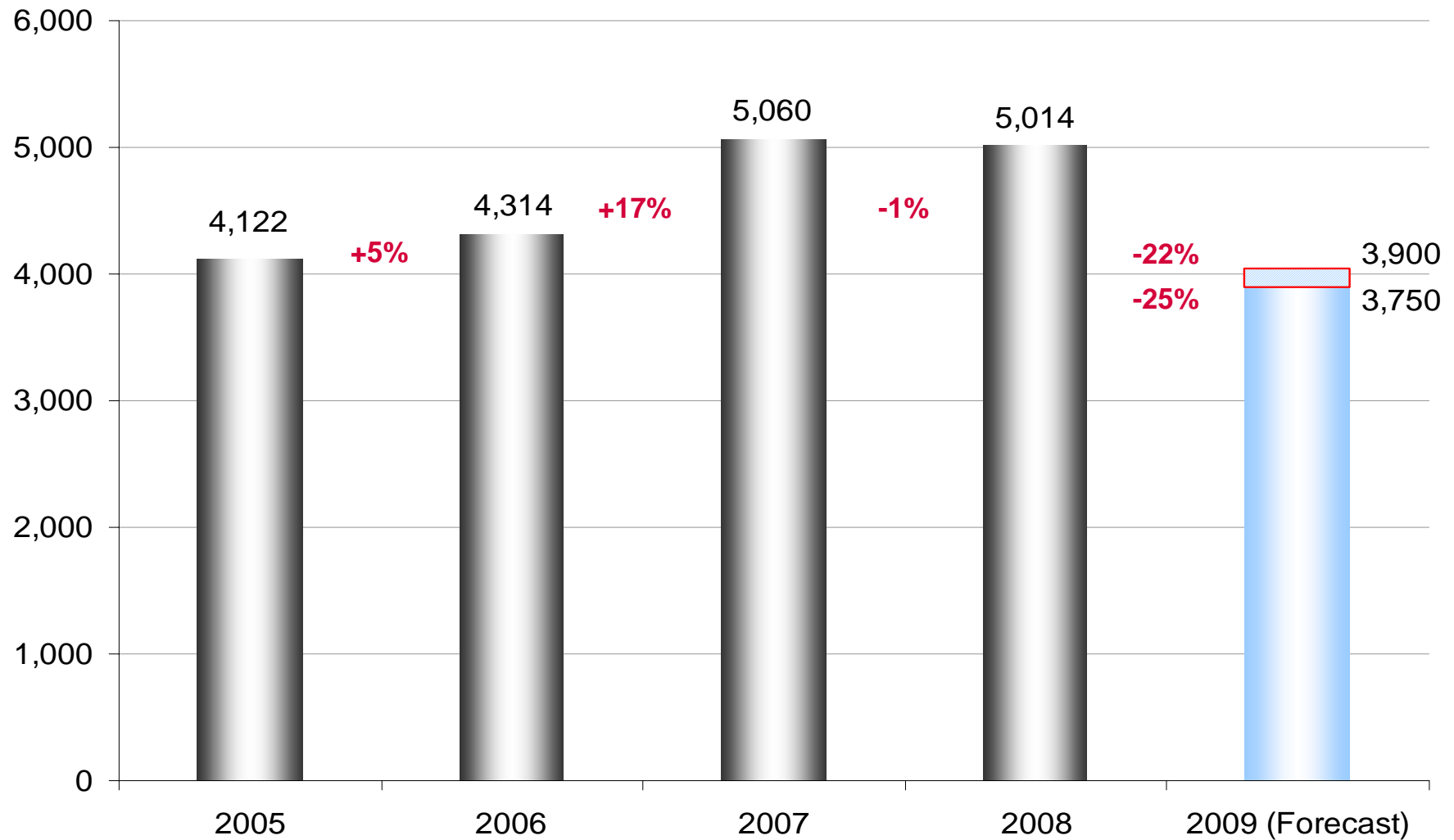
Business development in 2009 – MAHLE Group

Sales development

[million Euro]



Driven by performance

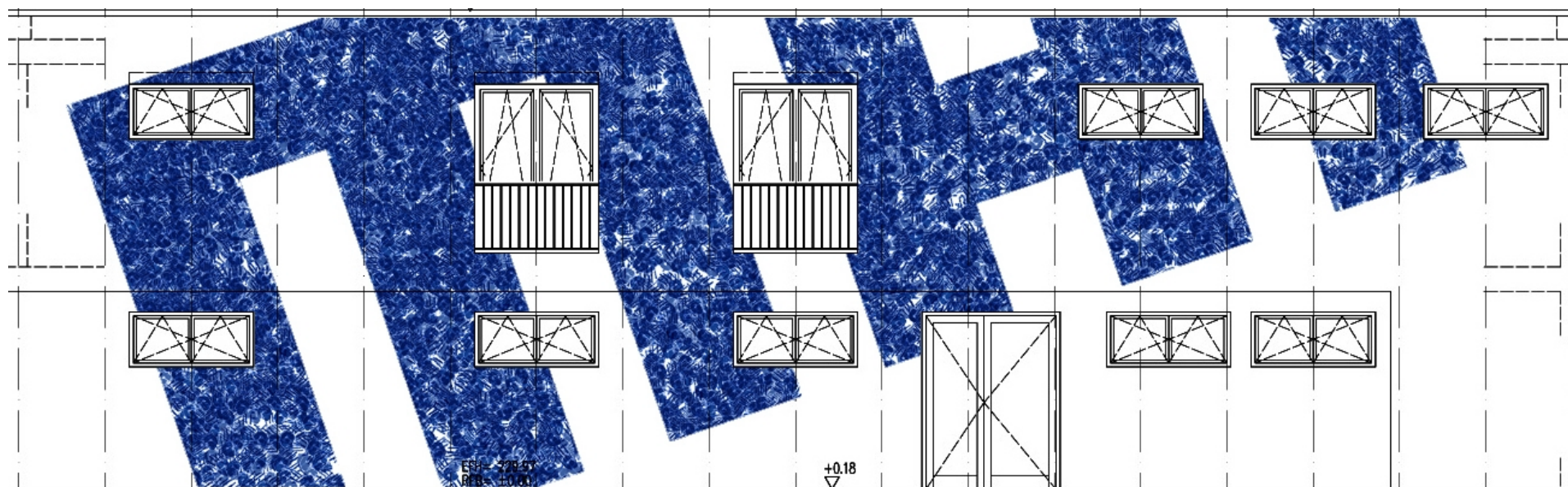


MAHLE daycare facility

Opening scheduled for October 2009

MAHLE

Driven by performance



Preview of the IAA 2009

Minimization of friction loss – using the example of the controlled oil and coolant pumps

MAHLE

Driven by performance

The controlled MAHLE pendulum-slider oil pump supplies lubricating oil to the engine as and when needed. The result: A vehicle that uses this intelligent pump technology can achieve fuel savings of up to 2% in the driving cycle (NEDC).



Pendulum-slider oil pump

Preview of the IAA 2009

Optimization of charge exchange – using the example of the CamInCam® camshaft

MAHLE

Driven by performance

The MAHLE CamInCam® design is based on two concentric camshafts. Two cams of one cylinder can thus be controlled independently of each other. The possible control strategies result in greater power and torque as well as lower fuel consumption and emissions.



MAHLE CamInCam® camshaft

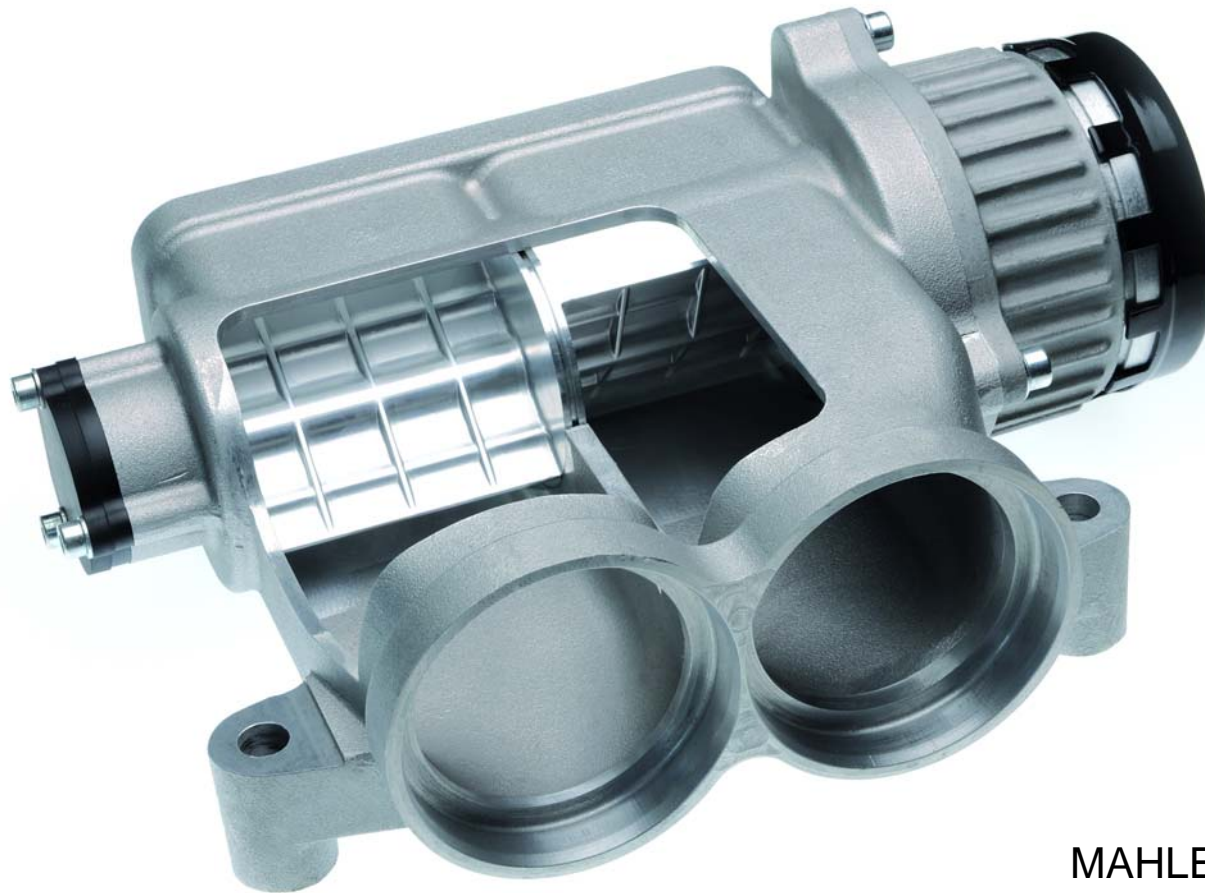
Preview of the IAA 2009

Optimization of the combustion process – using the example of the fast-switching charge air valve

MAHLE

Driven by performance

The dynamic mechanism of MAHLE's fast-switching charge air valve enables high EGR rates of up to 50% without negatively impacting fuel efficiency.



MAHLE charge air valve

Preview of the IAA 2009

Downsizing technology – using the example of a exhaust gas turbocharger for gasoline engine

MAHLE

Driven by performance

Exhaust gas turbocharger for downsized gasoline engine to reduce fuel consumption.



Exhaust gas turbocharger for gasoline engine

MAHLE

Driven by performance

Thank you for your attention.