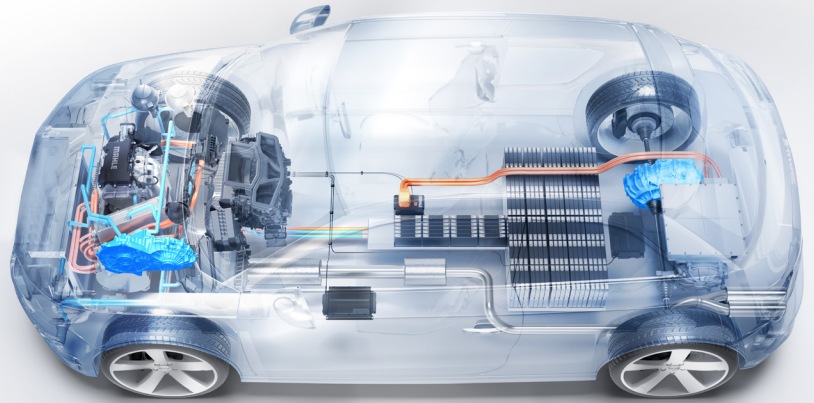


MAHLE Powertrain Transmission Calibration



Vehicle Drivetrain Optimisation

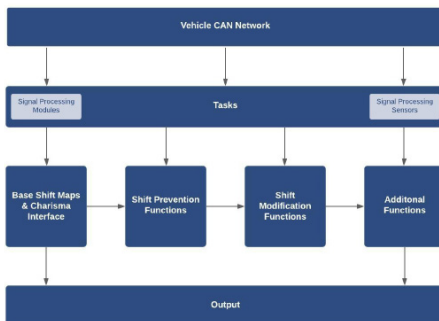
Driveability, Emissions & OBD Expertise

Powertrain Development & Validation

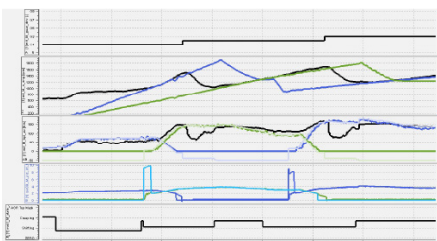
Transmission Calibration

With a rich heritage and wealth of experience in developing high performance powertrains from concept through to production, MAHLE challenges the view that performance and economy are competing objectives.

By drawing on our involvement with many modern powertrains currently in the marketplace, MAHLE Powertrain are able to combine a deep understanding of each component; with a holistic, whole-system engineering approach that recognises the complex interactions that can occur between them. Through honing our skills and extending our knowledge, MAHLE Powertrain is able to extract the full potential from every component and control system. We are recognised throughout the industry as experts in powertrain development and calibration providing the foundation for our ability to deliver the optimum solutions for vehicle performance, emissions and driveability.



>> Transmission software



>> Data Analysis

Contact Us:
Powertrain@mahle.com

MAHLE Powertrain Ltd
Costin House, St James Mill Road
Northampton, NN5 5TZ, UK
Tel. +44 (0)1604 738 000

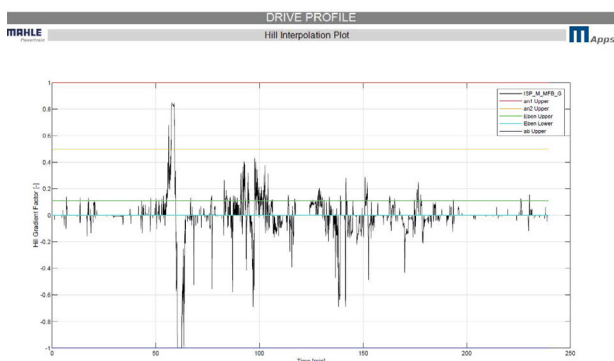
MAHLE ZG Transmissions
Georg-Kollmannsberger-Straße 3
85386 Eching, Germany
Tel. +49 89 18 94 169-0

MAHLE Powertrain LLC
14900 Galleon Court
Plymouth, MI 48170 USA
Tel. +1 734 738-52 01

www.mahle-powertrain.com

Capabilities

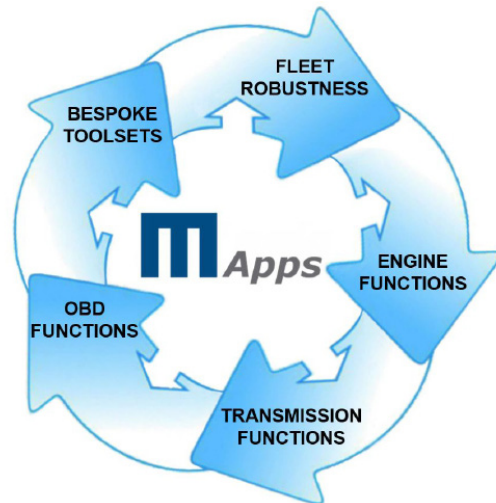
- Adaptive shift strategy calibration
- Emissions & RDE optimisation of transmissions functions for all markets
- OBD calibration & development
- Engine interface & calibration expertise
- All vehicle powertrain configurations
 - › Conventional IC Engine
 - › Mild hybrid
 - › Plug-in hybrid electric vehicle
 - › Electric vehicles
- Comprehensive testing & validation support
- Project management from concept to production ready calibration
- Supplier management of shift quality requirements



>> MApps hill interpolation analysis

Summary

MAHLE Powertrain's transmissions calibration team provides expertise in driveability, emissions and OBD, as well as whole powertrain development and validation. We take a 'no-compromise' approach, delivering the maximum performance, highest efficiency and best durability for the lowest emissions and at the lowest cost.



>> MAHLE Applications

Robustness

- MAHLE Applications (MApps) toolset developed to integrate into all phase of transmission development program to support key work packets
 - › Transmissions calibration & development
 - › Development & validation of OBD functionality
 - › Shift energy management
 - › Evidence gathering to support legislative compliance
 - › Support decisions for new requirements & features
 - › Tailored to customer requirements & can cover PHEV & BEV applications
- Transmissions & driveline hardware
 - › Thermal validation & calibration
 - › Instrumentation & validation of components for in vehicle testing

Contact Us:
Powertrain@mahle.com

MAHLE Powertrain Ltd. 2021

MAHLE Powertrain GmbH
Einsteinring 5
85609 Aschheim, Germany
Tel. +49 89 962915-0

MAHLE Powertrain Ltd
13.210-877
Jundiaí / São Paulo, Brazil
Tel. +55 11 4589-0400

MAHLE Automotive Technologies
No. 1299 Huan Cheng Bei Road, Fengpu Industrial Park
201 401 Shanghai, Fengxian District, China
Tel. +86 21 5136-0595