

## MAHLE Powertrain Prototype Assembly



Save Time

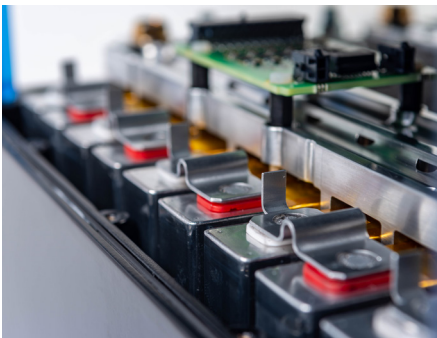
Reduce Risk

Increase Flexibility

### Prototype Build - Mechanical

MAHLE Powertrain's highly skilled team are experienced in building prototype assemblies from V12 engines. The engine build facility is equipped with:

- 18 x build bays with computerised documentation / build records
- Ability to screen off build bays to provide confidential build areas
- Machining and fabrication support
- Instrumentation fitting for temperature, pressure, vibration & strain
- Hot test stands for integrity checking
- 3 stage component wash



>> Electrical prototype build

Contact Us:  
Powertrain@mahle.com

MAHLE Powertrain Ltd  
Costin House, St James Mill Road  
Northampton, NN5 5TZ, UK  
Tel. +44 (0)1604 738 000

MAHLE ZG Transmissions  
Georg-Kollmannsberger-Straße 3  
85386 Eching, Germany  
Tel. +49 89 18 94 169-0

MAHLE Powertrain LLC  
14900 Galleon Court  
Plymouth, MI 48170 USA  
Tel. +1 734 738-52 01

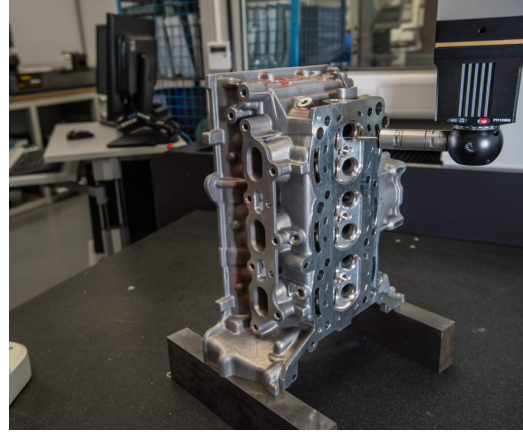
[www.mahle-powertrain.com](http://www.mahle-powertrain.com)

### MAHLE Powertrain Prototype Assembly

#### Prototype Build - Electrical

MAHLE Powertrain's prototype electrical build capabilities have increased to cope with the demands of increasing powertrain electrification and can offer customers:

- Battery module assembly
- E-machine & battery instrumentation
- Harness manufacture
- E-machine assembly
- Battery module & e-machine end of line integrity testing

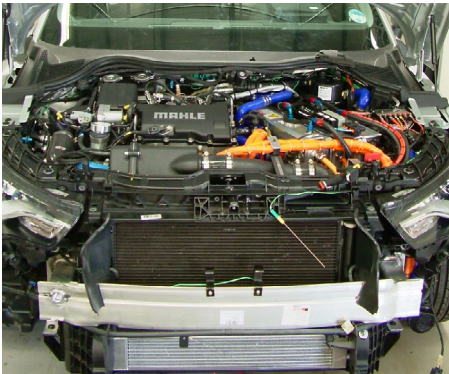


>> Metrology

#### Prototype Build - Vehicle

MAHLE Powertrain's mechanical and electrical build expertise combine to provide a highly skilled prototype vehicle assembly service, offering:

- 8 x build bays in a fully equipped confidential vehicle workshop
- Vehicle surface plate for measurement or BIW modification
- Full vehicle assembly from BIW or modification to existing vehicle
- Instrumentation & data logging equipment installation/commissioning



#### Logistics and Metrology Services

MAHLE Powertrain has developed a Supplier Quality Assurance, Logistics & Metrology service that offers:

- SQA engineer support for supplier & deviation management
- Inward logistics for components using SAP
- Temperature controlled metrology area, traceable to UKAS standards
- 3D Laser scanning FARO arm
- Mitutoyo Scanning CMM
- Valvetrain component measurement, spring rates, camshaft profile etc.



>> Attention to detail

Contact Us:  
Powertrain@mahle.com

MAHLE Powertrain Ltd. 2021

MAHLE Powertrain GmbH  
Einsteinring 5  
85609 Aschheim, Germany  
Tel. +49 89 962915-0

MAHLE Powertrain Ltd  
13.210-877  
Jundiaí / São Paulo, Brazil  
Tel. +55 11 4589-0400

MAHLE Automotive Technologies  
No. 1299 Huan Cheng Bei Road, Fengpu Industrial Park  
201 401 Shanghai, Fengxian District, China  
Tel. +86 21 5136-0595