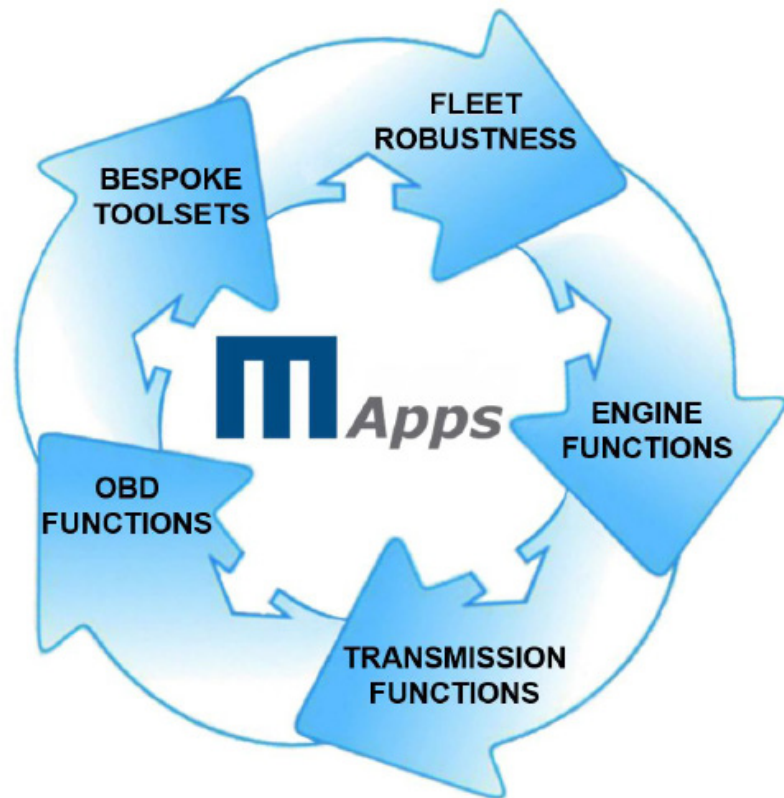
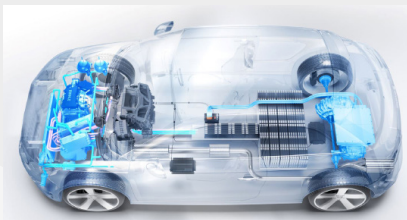


MAHLE Powertrain MAHLE Applications



- > Powerful toolset for data processing
- Bespoke software developed in-house
- Adaptable for multiple activities



>> Complex data generated from multiple vehicle systems



>> Automated data processing from multiple sources

What are the data challenges facing engineers?

- Mechanical Simulation
 - › Increasing volumes of test data
 - › Data from multiple sources and multiple formats
- Resource constraints
 - › Reducing project timescales and limited resource availability
- Lack of standardisation between teams
 - › Individuals using 'local' uncontrolled tools

MAHLE Applications

- Fully configurable toolsets, developed by calibration specialists to support key work packages:
 - › Engine functions
 - › Transmission functions
 - › Diagnostics
 - › Vehicle functions
- Standardised and automated data processing and reporting

MAHLE Powertrain Ltd
Costin House
St James Mill Road
Northampton
NN5 5TZ
Tel: +44 (0)1604 738 000

MAHLE Powertrain LLC
14900 Galleon Court
Plymouth
Michigan 48170
USA
Tel: 001 734 738-52 01

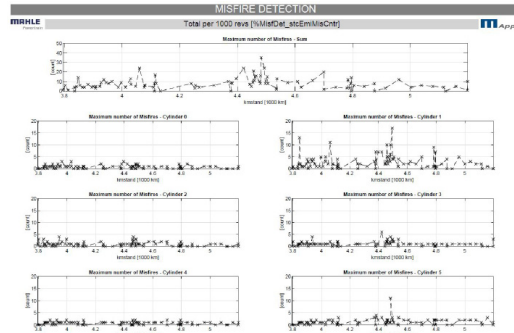
MAHLE Powertrain GmbH
Einsteinring 5
85609 Aschheim
Germany
Tel: +49 89 96 29 15-0

MAHLE ZG Transmissions
Georg-Kollmannsberger-Straße
3 85386 Eching
Germany
Tel. +49 89 18 94 169-0

MAHLE Powertrain MAHLE Applications

Benefits

- Tailored data processing & reporting tools for key calibration tasks
 - › Results are easily understood by all team members
- Efficient resource utilisation
 - › Automation of data processing frees engineering resources
- Integrates into all phases of a calibration program
 - › Early identification of concerns improves product quality
 - › Evidence presented in a consistent & standardised format to support gateway reviews

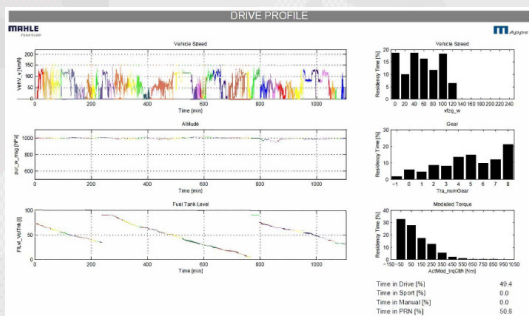


>> Fuel cell and vehicle simulation

Battery Simulation

- Robustness project
 - › Manage data processing, analysis & reporting from any fleet data
 - › Give regular feedback on calibration robustness throughout a products development
 - › Support concern resolution
- Report evidence to support AES / BES / AECD documentation
 - › Help support decisions for new requirements / features
- Develop bespoke toolsets to support development / calibration activities

>> Example report page - OBD Summary



>> Example report page - Drive Profile

Capabilities

MAHLE Powertrain's MApps is a powerful toolset for data processing that is adaptable for multiple activities. This in-house developed, bespoke software provides reliable method for processing and interrogating large amounts of data. Tailored reports are generated to allow easy identification of issues and concerns to aid the development process.

MAHLE Powertrain Ltd
13.210-877
Jundiaí / São Paulo
Brazil
Tel. +55 11 4589-0400

MAHLE Automotive Technologies
No. 1299 Huan Cheng Bei Road, Fengpu Industrial Park 201
401 Shanghai, Fengxian District
China
Tel. +86 21 5136-0595

MAHLE product information 12/2021

www.mahle-powertrain.com